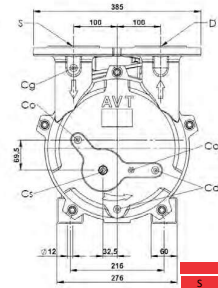
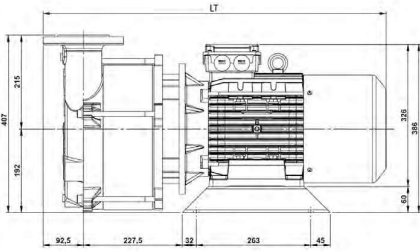
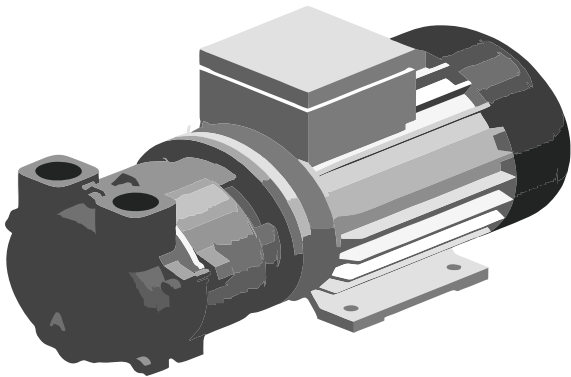
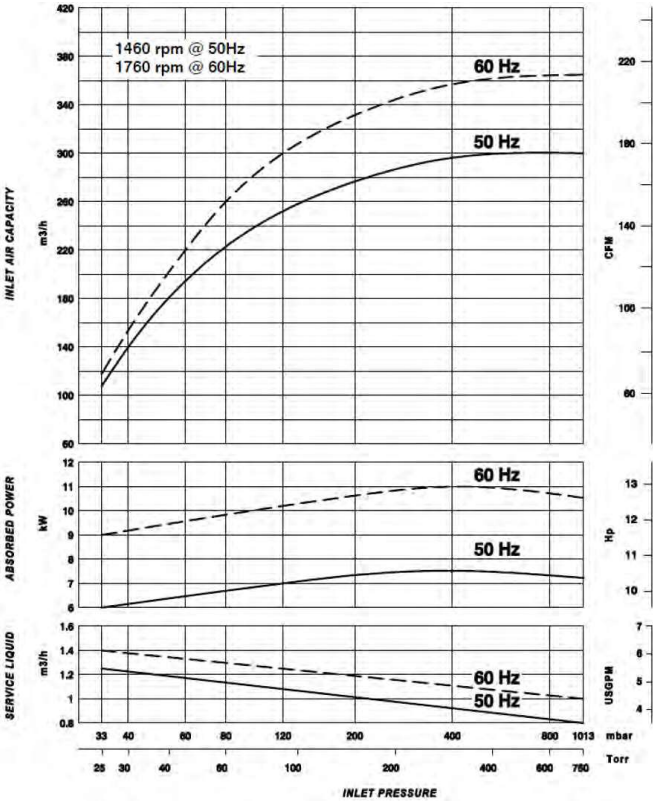


Subject to change without prior notice



CONNECTIONS	
S	DN65-2 1/2" Section
D	DN65-2 1/2" Discharge
Cs	G 1/2" Service liquid
Cd	G 3/8" Pump drain
Co	G 3/8" Overflow
Ca	G 1/4" Anti-cavitation
Cg	G 3/8" Vacuum gauge

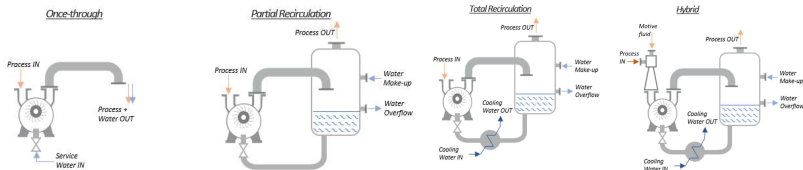


NOTES :
The given data are referred to dry air at the temperature of 20°C, at the atmospheric discharge pressure (1013 mbar), and of supply of service water at 15°C temperature.
Performances tolerance ±10%.

PRODUCT INFORMATION:
FLA 326 is a simple, compact, and reliable liquid ring pump capable to handle almost any gas mixture, including vapors in vacuum or over pressure. The operating principle combined to its accurate design allow for severe duty with high tolerance of liquid carry over. The wide range of suction pressure (down to 33 mbar abs) makes the FLA series versatile and suitable for many industrial applications and more. The stainless steel port plate and impeller are designed and manufactured with accurate process to reach outstanding and steady performance. The low operating speed associated with the robust and simplified construction grant a long service life with minimal maintenance.

APPLICATIONS:
Vacuum industrial processing, Sterilization, Extrusion, Degassing, Evaporation and Distillation, Priming, Vacuum sewage, Bottling, Depoultry, Fish Farming

Operating Modes



FLA 326		
Voltage		277/480V
Part Number		8502010
Nominal Capacity	CFM	176.5734
Total Final Pressure (Abs.)	Torr/inHg	24.75/.97
Motor Power	H.P.	15
Nominal r.p.m.	n/min	1770
Noise Level	dB(a)	72
Weight	Lbs.	344
Max Gas Temperature		212° F
Max Liquid Temperature		122° F

(*) Please contact the Manufacturer if environmental conditions are different from those indicated.

