

Main Accessories	SC 5CC
Spare Part Kit	K9813009/CB
Shock Mounts	4x1503005
Inlet Filter	9001004/0
Inlet Filter Element	1801001

**PRODUCT DESCRIPTION:**

The SC 8CC pump is equipped with:

- Non-return valve at the inlet
- Silencer at the outlet
- Rotor and pump body NPO treated to withstand oxidation.
- 24V DC Motor

PUMP

The dry running pump SC 8CC has been developed for use for those industrial applications that require an oil-free industrial operation in a restricted but sufficiently ventilated space.

it is also possible to use the pump both as a vacuum pump or as a compressor since it is equipped with a registration plate that displays both the vacuum and pressure values..

The positions of the fixing points to the user system have not been changed (see dimensions).

COMPRESSOR

In this model, a special anti-oxidation treatment has been added as standard equipment. Rotor and pump body are treated with NPO to increase hardness and withstand oxidation. The NPO treatment increases the hardness of the rotor, pump body and cover, making them resistant to oxidation. The castings have been redesigned with a new updated line. This design of the SC 8CC pump reflects the most recent production technologies applied by DVP to the oil-free rotary vane pumps.

MAIN APPLICATION FIELDS:

Food and beverage, construction industry, packaging, plastic, rubber and resin, analytical fields, paper industry, silk screen printing, wood presses, suction lifting machines, pollutant sampling and analysis.

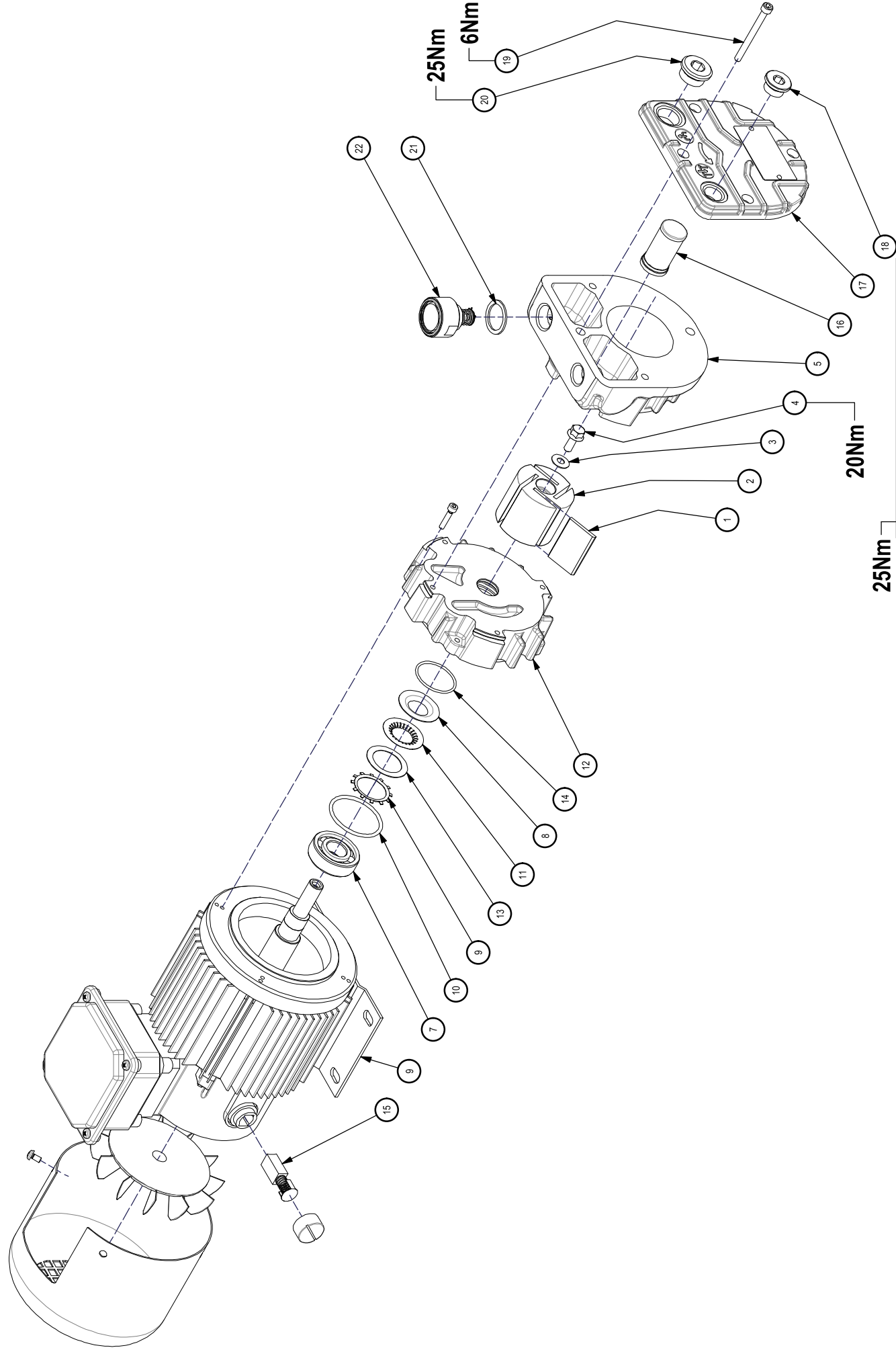
	SC 5 CC	
	50 Hz	60 Hz
Part Number	9813009/CB	
Nominal Capacity	4.7 CFM	
Total Final Pressure (Abs.)	112.5 inHg / 25.50 Torr	
Motor Power	.4 HP	
Nominal r.p.m.	3000	
Noise Level dB(A) (Pump)	67	
Noise Level dB(A) (Compressor)	67	
Weight	25 Lbs.	
Pump Intake/Outlet	3/8"/ 1/2"	
Operating Temperature	185°F	
Dimensions	12" X 8" X 5.5"	

Please contact the Manufacturer if environmental conditions are different from those prescribed.



POS	Description	Part Number	QTY	Kit
1	Vane	3301029	4	X
2	Rotor	3102030	1	
3	Cup Spring 15x6.2x0.7 DIN 2093	0508001	1	
4	Screw Hexagonal Head M6x16	///	1	
5	Pump Body	3001162	1	
6	Electric Motor	4404017	1	
7	Bearings 6203-2RS	2401055	1	
8	Teflon Washer	4001056	1	
9	Seeger Zj35	0503004	1	
10	O-Ring 3162 FKM	1001105	1	X
11	Flat Spring	4703003	1	
12	Motor Flange	4301092	1	
13	Shim Washer	///	1	
14	O-Ring 2125 Viton	1001090/V	1	X
15	Motor Brushes	1203006	2	X
16	Filter Cartridge	1801078	1	X
17	Pump Cover	3202074	1	
18	Plug 3/8" with O-Ring FKM	1110009	1	
19	Screw TCCE M5x55	///	4	
20	Knob 1/2" + O-Ring FKM	1110010	1	
21	Copper Washer 1/2"	0305003 (*)	1	
22	Silencer Valve	9002019 (*)	1	

(\*) NOT NECESSARY IF USED AS A COMPRESSOR  
 /// NOT AVAILABLE AS A SPARE PART



POS	Description	Part Number	QTY
7			1
8			1
9			1
14			3
17			1
18			1
21			1
22			1
25			1